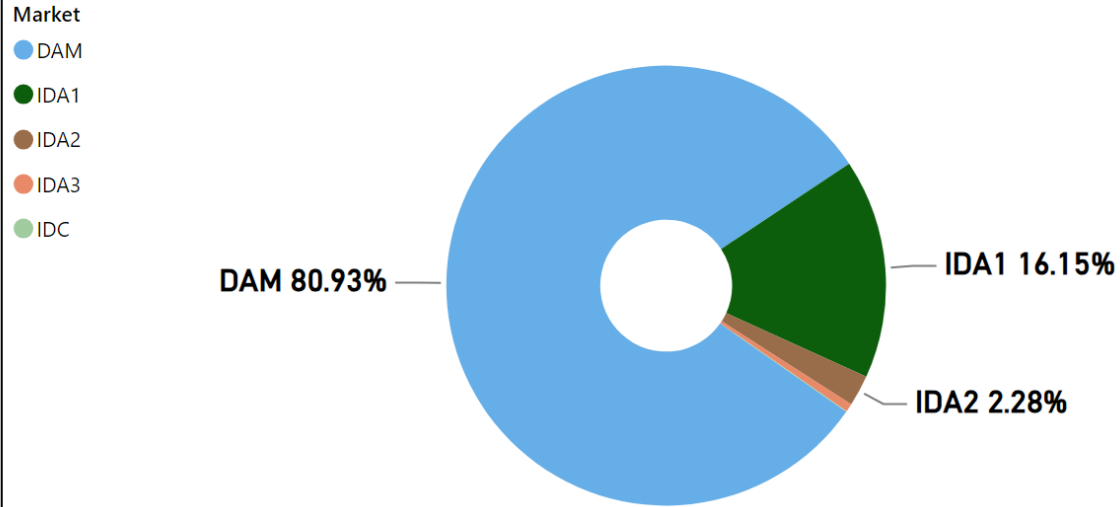


# MMU Weekly Market Summary Report

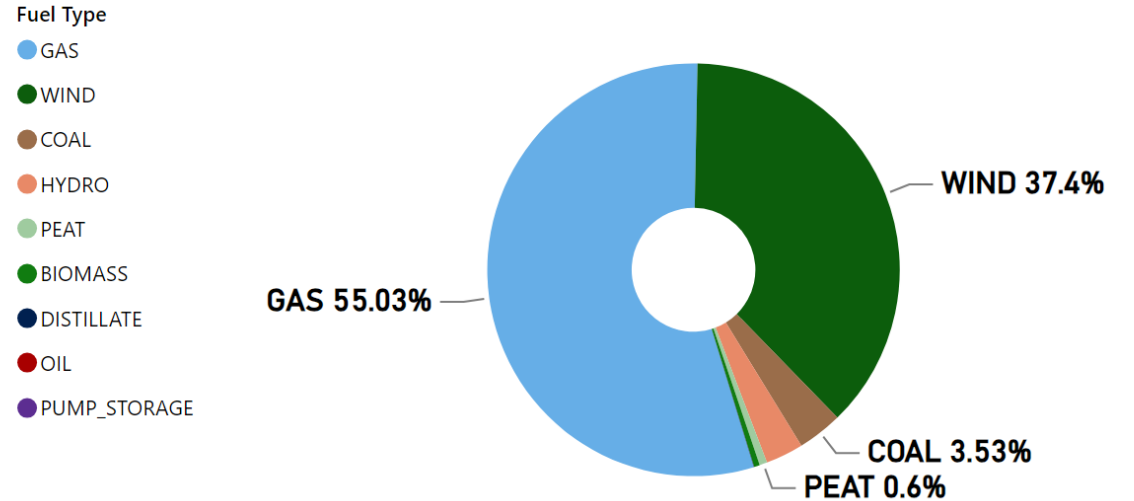
## - Week Commencing 30 October 2023

### Weekly Volume by Market



Source: SEMO PX

### Weekly Fuel Mix



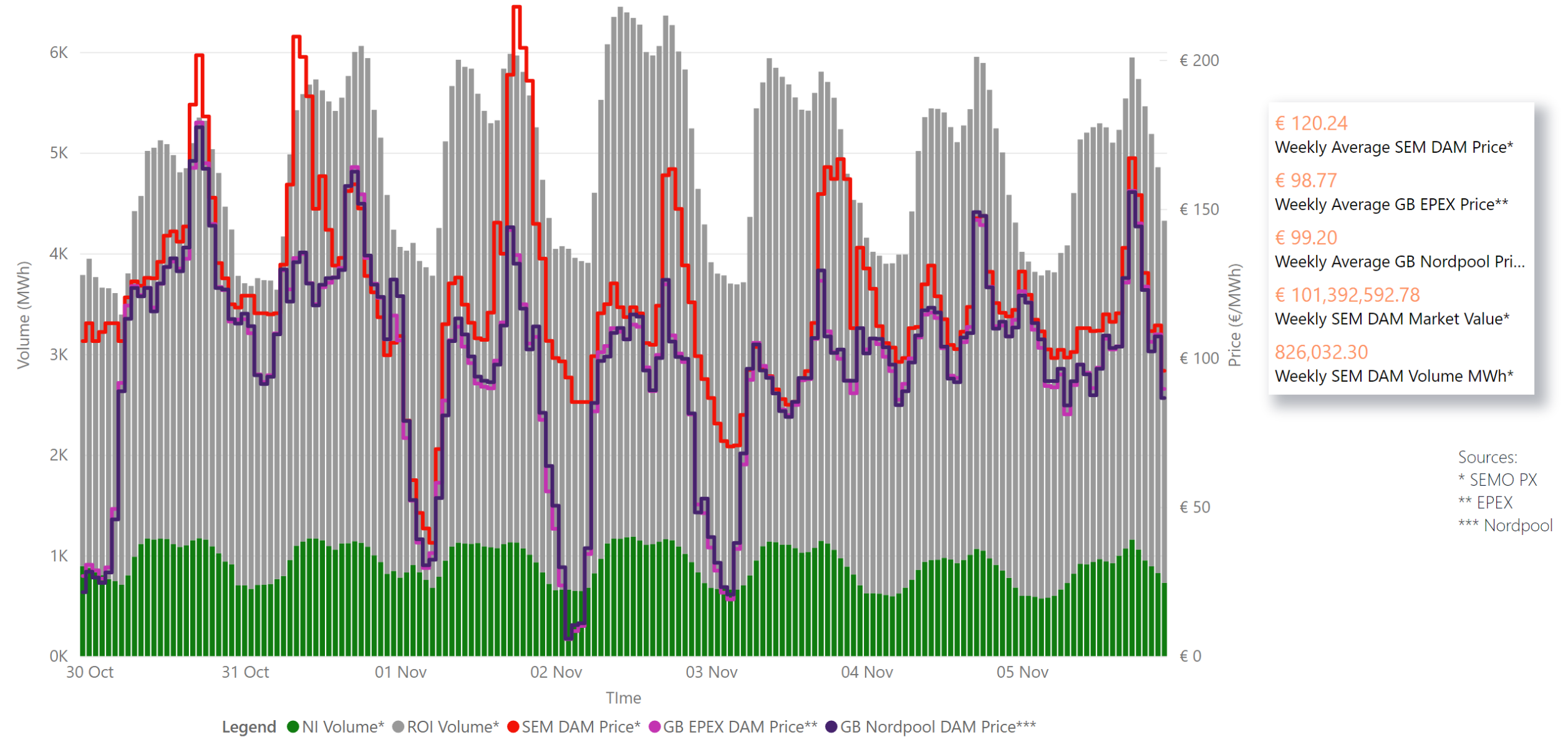
Source: SEMO PX

### Summary Table

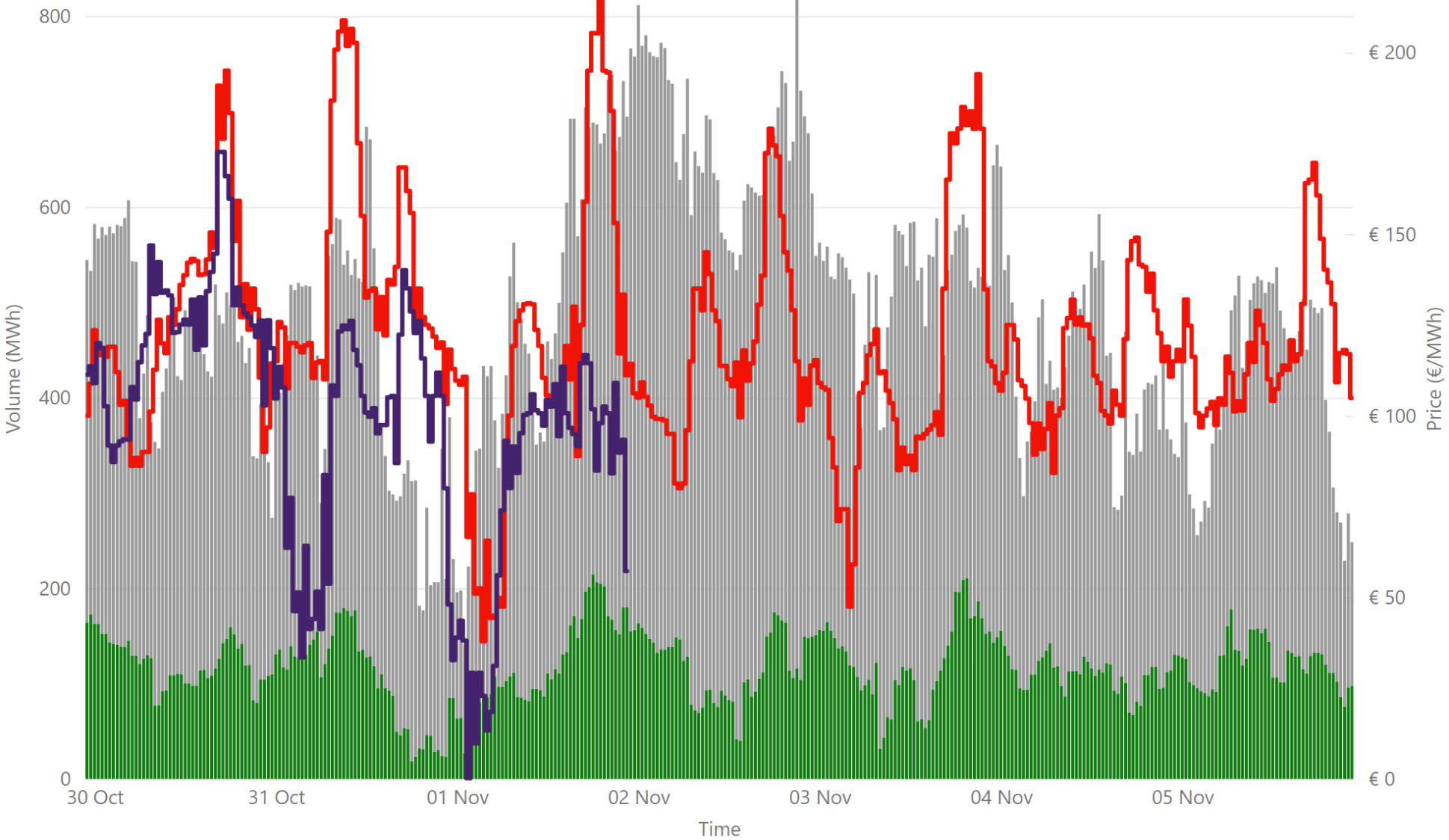
Date	Daily System Demand (MWh)*	Daily DAM Price (€/MWh)**	Daily Actual Wind (MWh)*	Daily Average Gas Price (p/th)***	Daily Average Coal Price (€/t)***	Daily Average Carbon Price (€/t)***
30 October 2023	105,499.25	135.32	24,300.75	120.50	128.60	78.25
31 October 2023	113,319.75	142.67	39,519.00	97.50	123.50	78.53
01 November 2023	115,008.25	124.10	46,706.50	87.00	122.50	78.07
02 November 2023	118,766.75	116.36	42,395.50	98.50	124.10	78.63
03 November 2023	115,641.50	106.48	32,718.25	98.50	124.10	78.63
04 November 2023	108,850.50	118.57	35,261.00	98.50	124.10	78.63
05 November 2023	104,372.25	117.18	37,563.25	98.50	124.10	78.63

Sources: \* EirGrid \*\* SEMO PX \*\*\* Oil Market Journal

# Weekly Day Ahead Market Summary - Week Commencing 30 October 2023



# Weekly Intraday Auction 1 Summary - Week Commencing 30 October 2023



€ 121.49  
Weekly Average SEM IDA1 Price\*

€ 99.46  
Weekly Average GB IDA1 Price\*\*

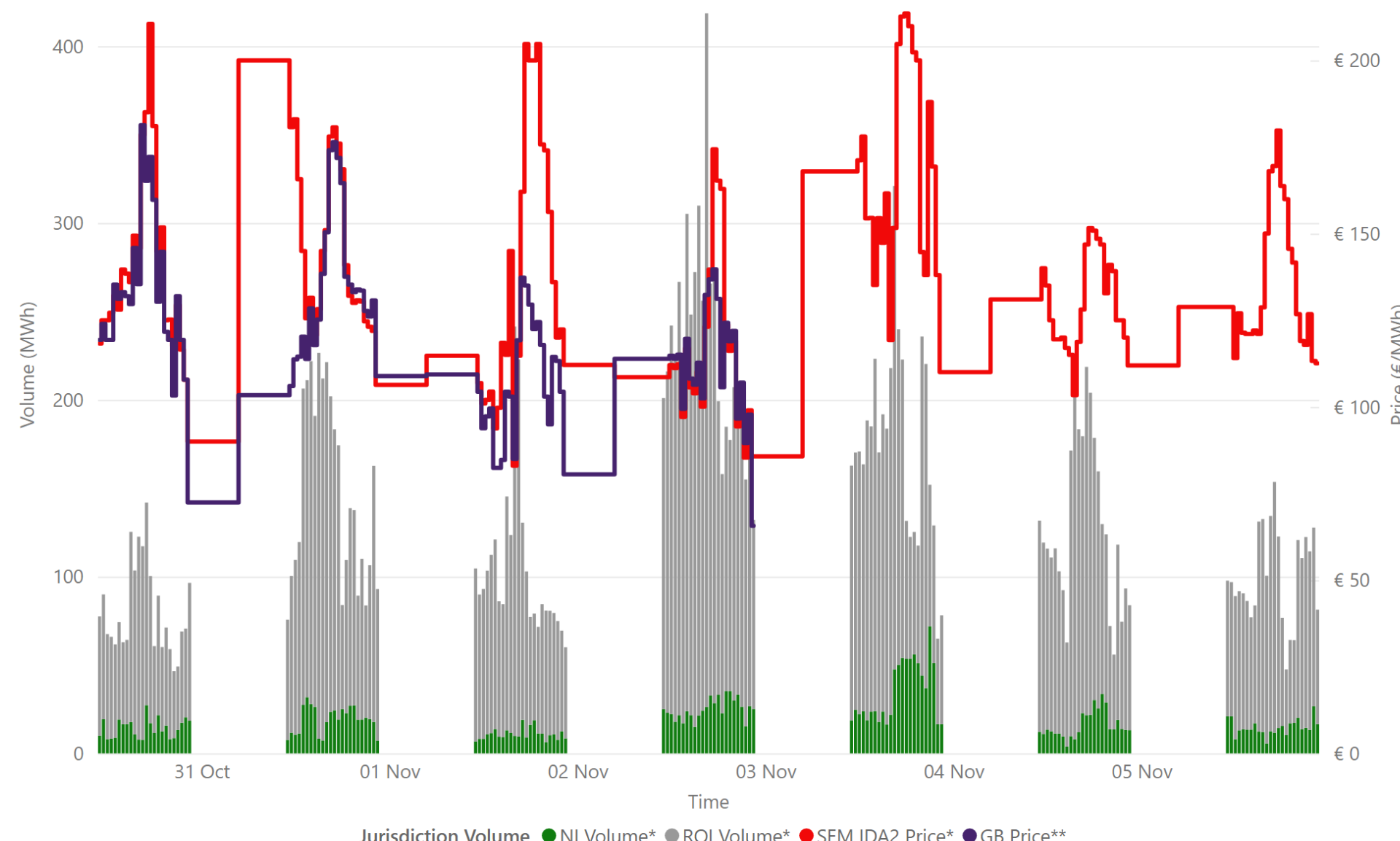
€ 20,262,900.84  
Weekly SEM IDA1 Market Value\*

164,838.10  
Weekly SEM DAM Volume MWh\*

Sources:  
\* SEMO PX  
\*\* EPEX

Legend ● NI Volume\* ● ROI Volume\* ● SEM IDA1 Price\* ● GB IDA1 Price\*\*

# Weekly Intraday Auction 2 Summary - Week Commencing 30 October 2023



€ 138.26  
Weekly Average SEM IDA2 Price\*

€ 120.51  
Weekly Average GB IDA2 Price\*\*

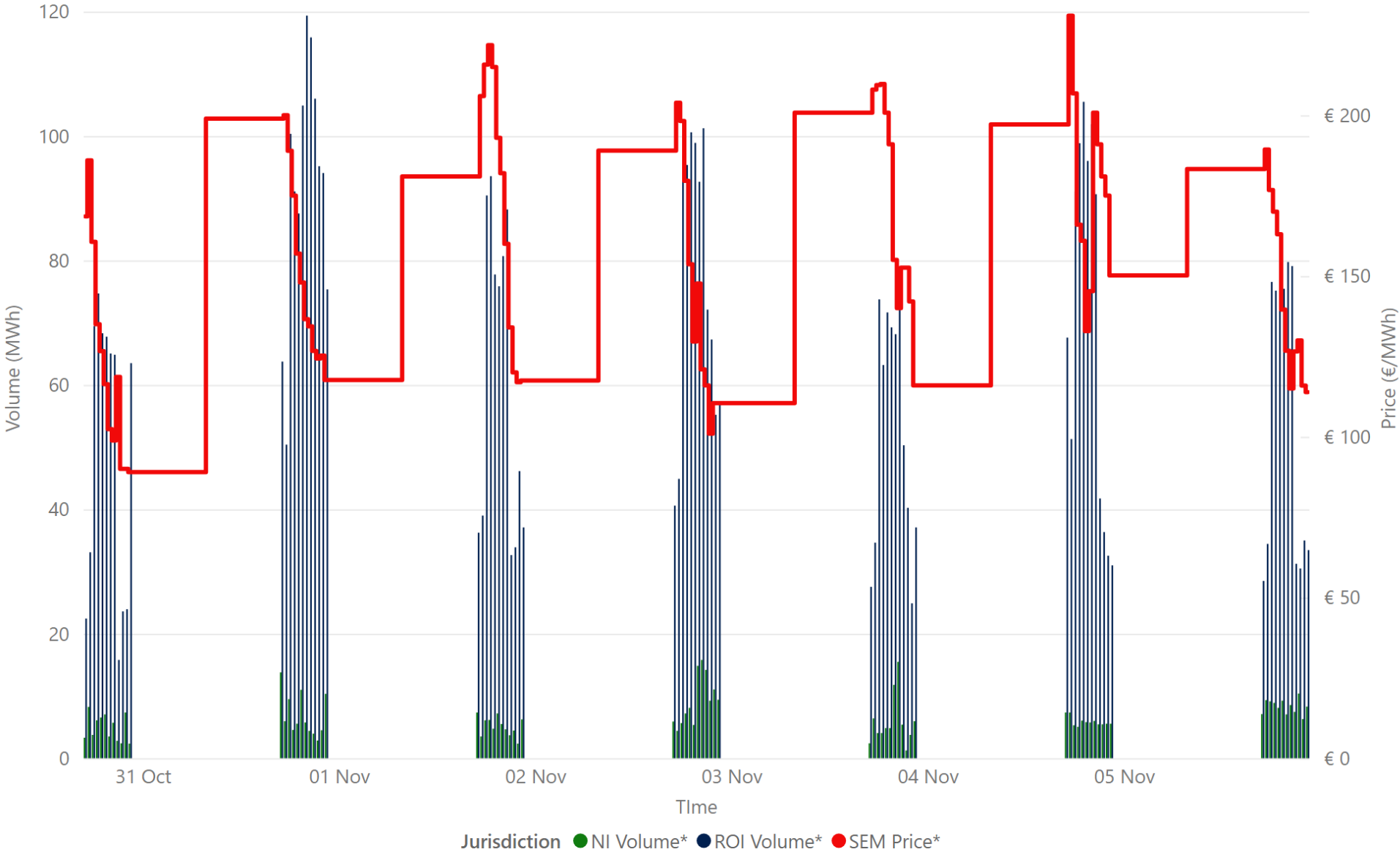
€ 3,188,474.30  
Weekly SEM IDA2 Market Value\*

23,221.05  
Weekly SEM IDA2 Volume MWh\*

Sources:  
\* SEMO PX  
\*\* EPEX

Jurisdiction Volume ● NI Volume\* ● ROI Volume\* ● SEM IDA2 Price\* ● GB Price\*\*

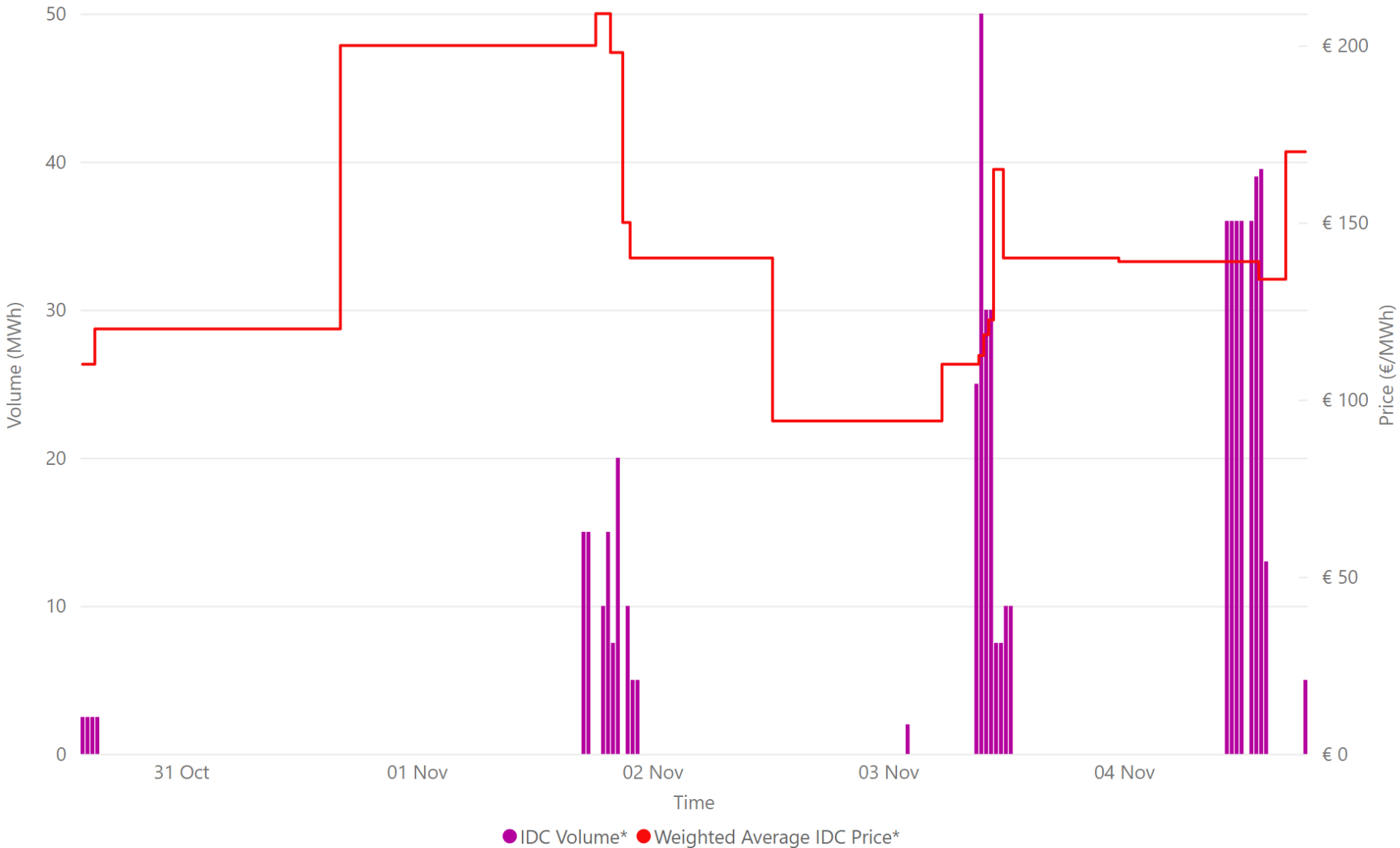
# Weekly Intraday Auction 3 Summary - Week Commencing 30 October 2023



€ 156.01  
 Weekly Average SEM IDA3 Price\*  
 € 946,687.54  
 Weekly SEM IDA3 Market Value\*  
 6,038.95  
 Weekly SEM IDA3 Volume MWh\*

Source: \* SEMO PX

# Weekly Intraday Continuous Summary - Week Commencing 30 October 2023



€ 146.24  
Weekly SEM IDC Average Price\*

€ 209.00  
Weekly SEM IDC Max Price\*

€ 94.00  
Weekly SEM IDC Min Price\*

561.00  
Weekly SEM IDC Volume MWh\*

Source: \* SEMO PX

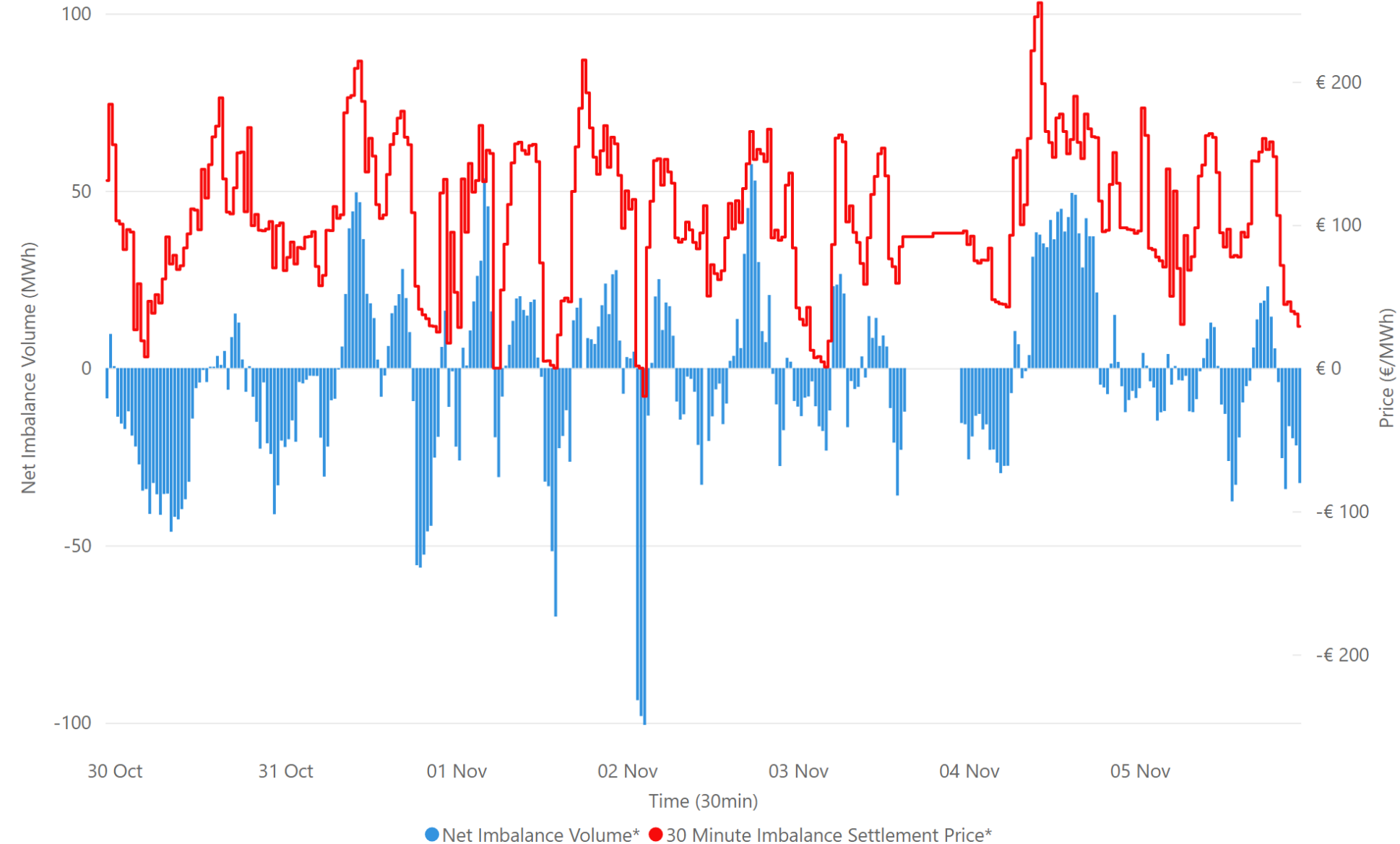
# Weekly Balancing Market 5 Minute Summary - Week Commencing 30 October 2023



€ 108.37  
Ave 5min Imbalance Price\*  
-€ 96.88  
Min 5min Imbalance Price\*  
€ 371.45  
Max 5min Imbalance Price\*

Source: \* SEMO

# Weekly Balancing Market 30 Minute Summary - Week Commencing 30 October 2023

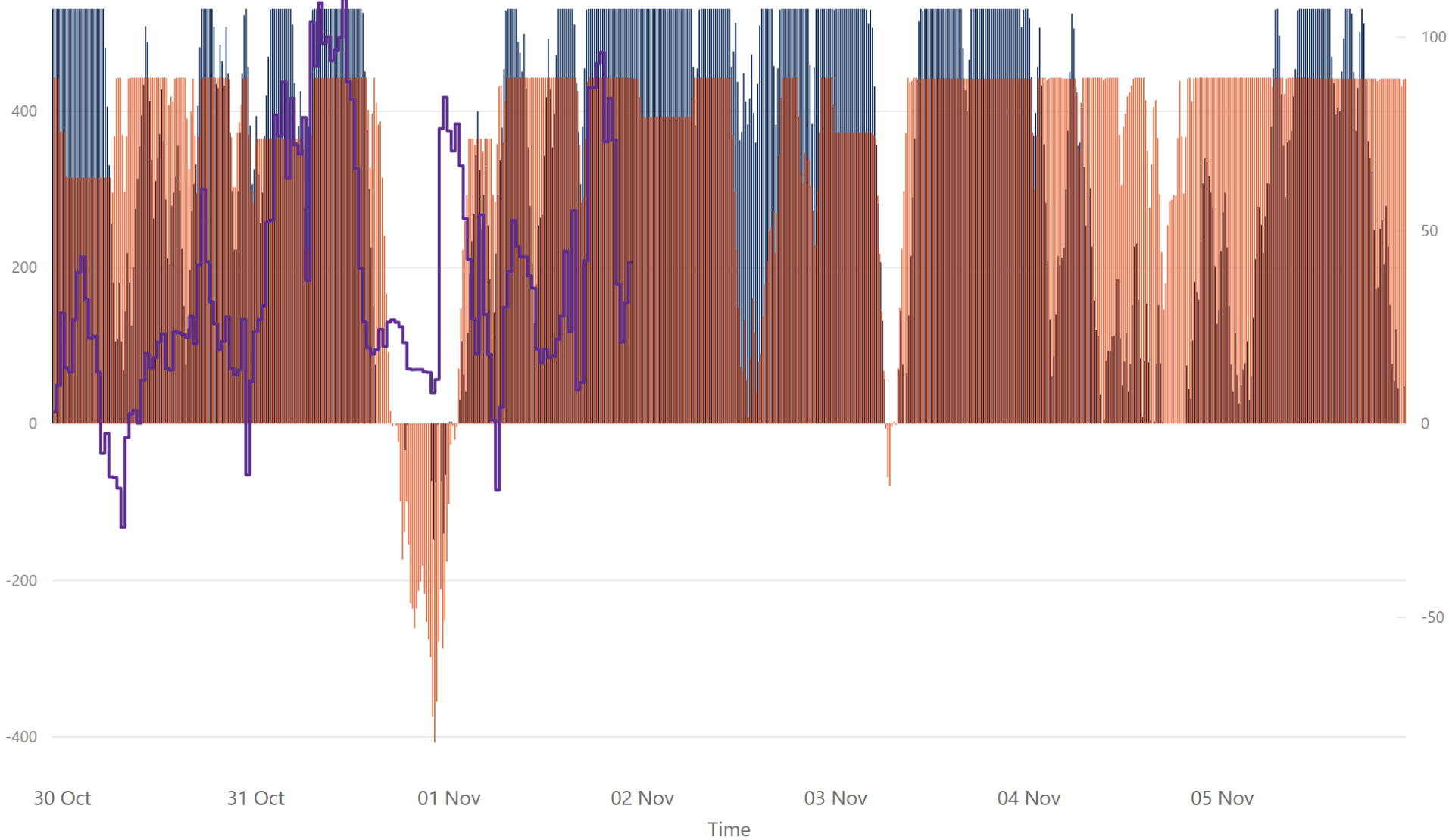


€ 106.19
Ave 30min Imbalance Price*
€ 255.08
Max 30min Imbalance Price*
-€ 19.75
Min 30min Imbalance Price*
57.52
Max Net Imbalance Volume*
-100.62
Min Net Imbalance Volume*

Source: \* SEMO



# Weekly Interconnection Summary - Week Commencing 30 October 2023



250,539.00  
Weekly MOYLE (MW) Import\*

-5,980.00  
Weekly MOYLE (MW) Export\*

244,559.00  
Weekly MOYLE (MW) NET\*

241,343.00  
Weekly EWIC (MW) Import\*

-616.00  
Weekly EWIC (MW) Export\*

240,727.00  
Weekly EWIC (MW) NET\*

Sources:  
\* EirGrid  
\*\* SEMO, EPEX & Nordpool

● EWIC Volume (MW)\* ● MOYLE Volume (MW)\* ● SEM-GB Spread\*\*

# Weekly Wind Capacity Summary - Week Commencing 30 October 2023



**3336**  
Max Actual Wind (MW)\*

**290**  
Min Actual Wind (MW)\*

**3596**  
Max Forecast Wind (MW)\*

**280**  
Min Forecast Wind (MW)\*

Sources:  
\* EirGrid

● 15 Minute Forecast Wind (MW)\* ● 15 Minute Actual Wind (MW)\*