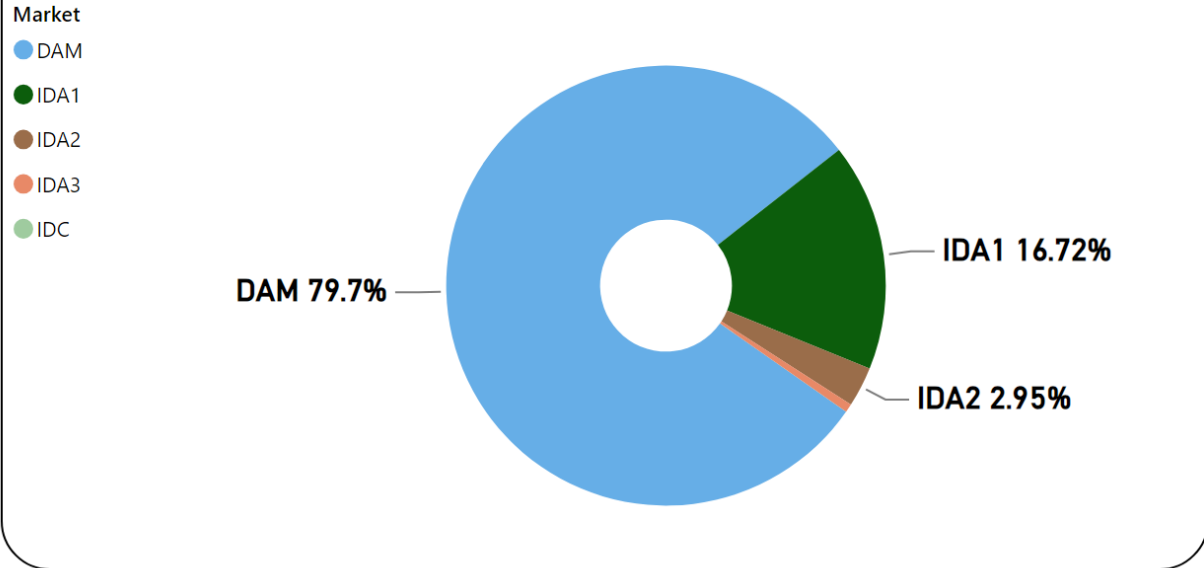


MMU Weekly Market Summary Report

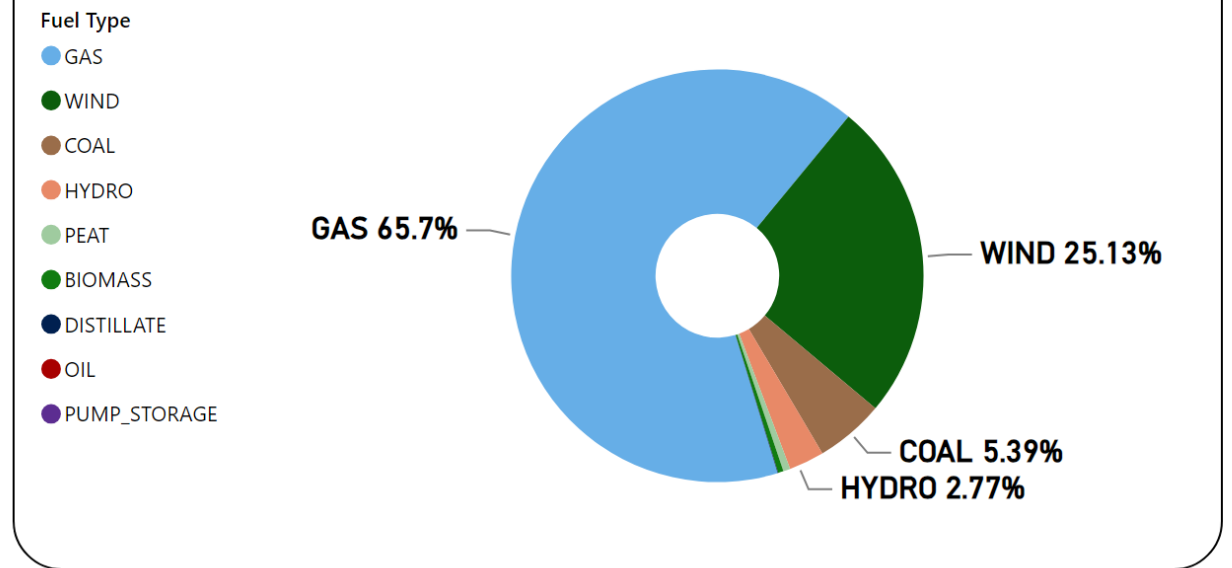
- Week Commencing 23 October 2023

Weekly Volume by Market



Source: SEMO PX

Weekly Fuel Mix



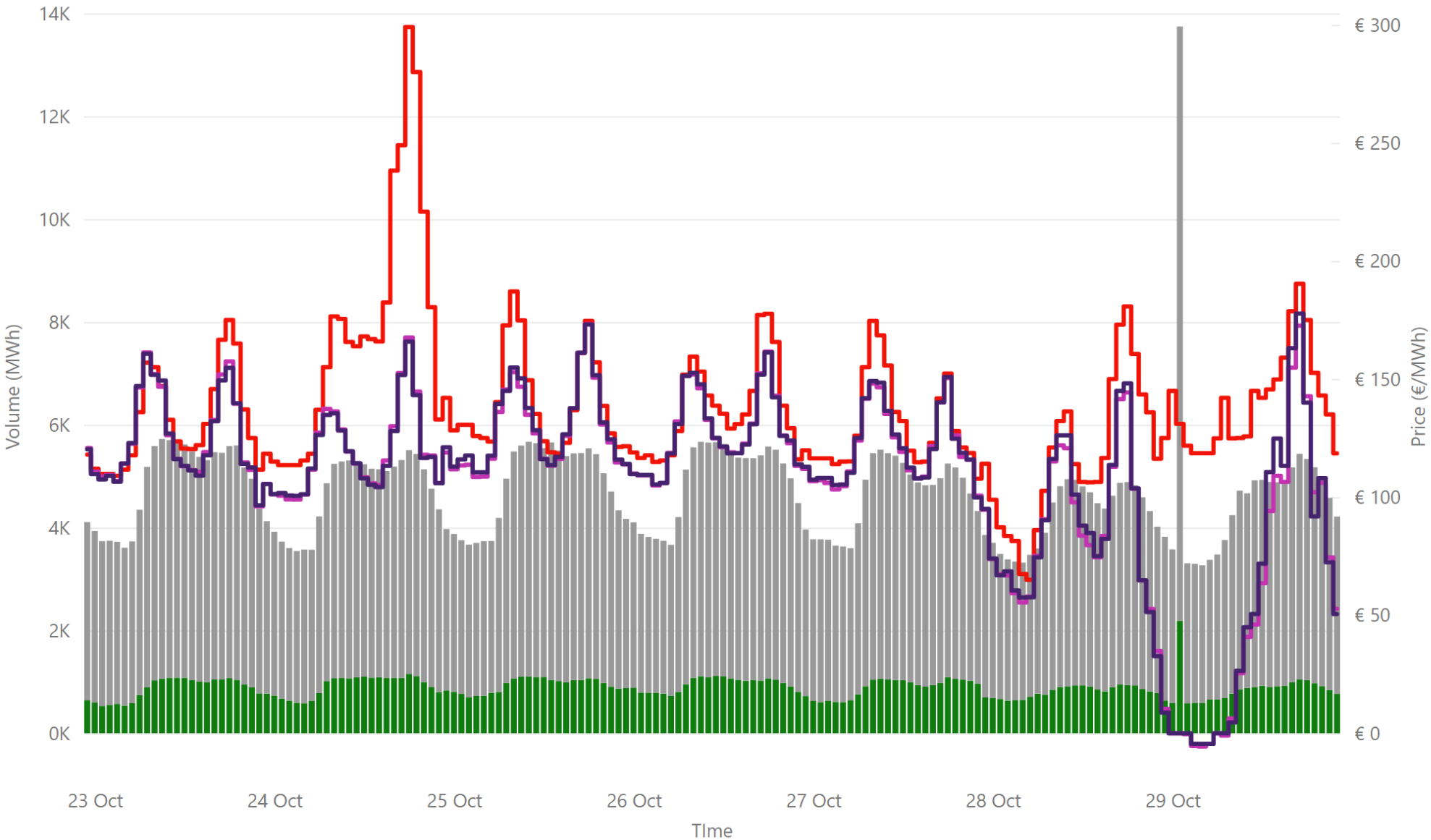
Source: SEMO PX

Summary Table

Date	Daily System Demand (MWh)*	Daily DAM Price (€/MWh)**	Daily Actual Wind (MWh)*	Daily Average Gas Price (p/th)***	Daily Average Coal Price (€/t)***	Daily Average Carbon Price (€/t)***
23 October 2023	113,296.75	133.76	38,875.25	118.80	137.25	79.96
24 October 2023	114,339.75	175.51	16,136.00	119.05	137.15	80.04
25 October 2023	115,488.50	141.53	30,051.00	121.25	135.80	79.43
26 October 2023	114,830.25	138.67	23,349.25	119.05	136.00	79.10
27 October 2023	113,201.50	131.13	22,770.75	117.05	136.00	78.90
28 October 2023	104,341.00	119.38	30,891.75	117.05	136.00	78.90
29 October 2023	101,722.00	141.95	17,042.25	117.05	136.00	78.90

Sources: * EirGrid ** SEMO PX *** Oil Market Journal

Weekly Day Ahead Market Summary - Week Commencing 23 October 2023



€ 137.45
 Weekly Average SEM DAM Price*

€ 107.95
 Weekly Average GB EPEX Price**

€ 107.37
 Weekly Average GB Nordpool Pri...

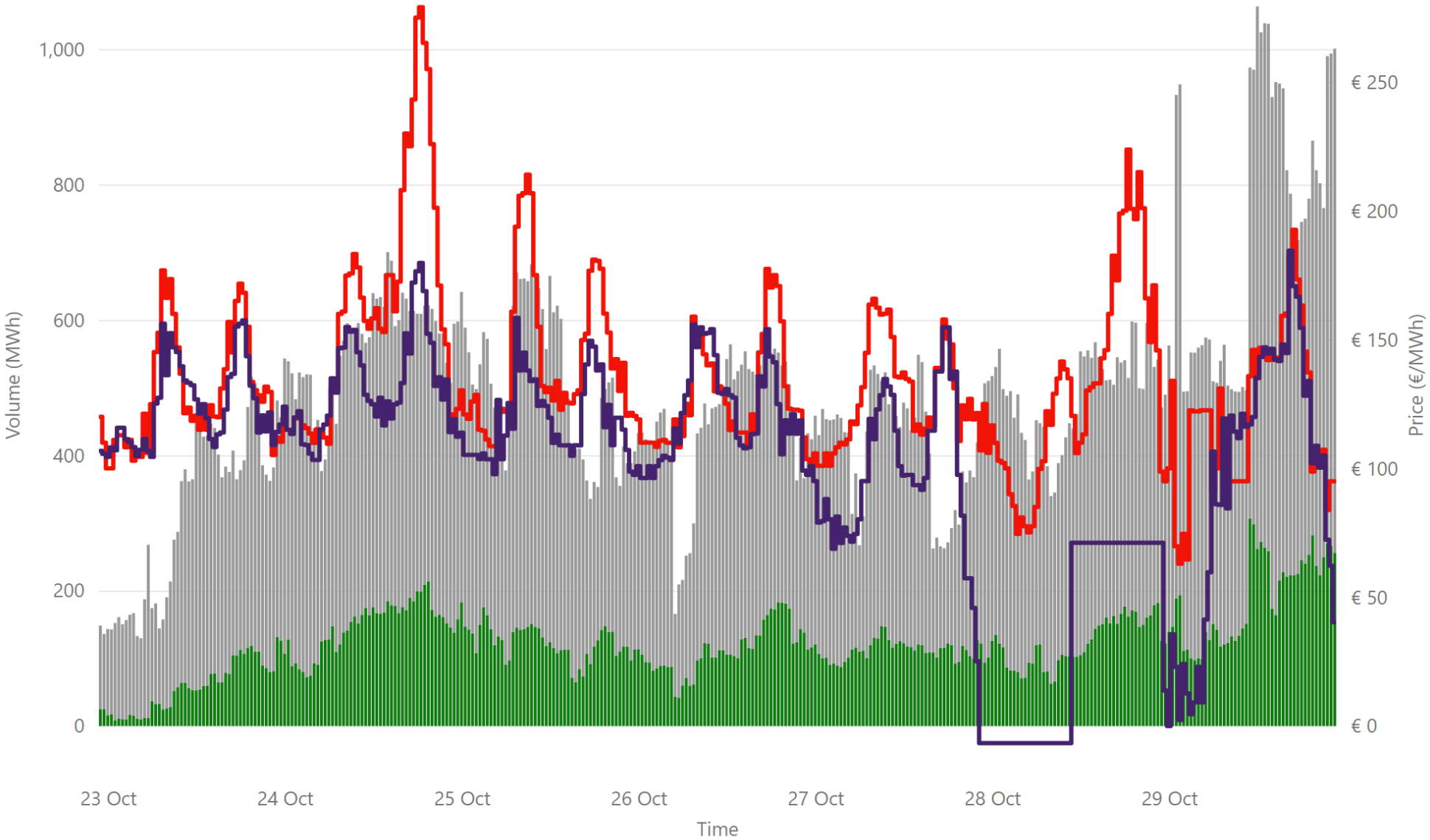
€ 111,033,227.91
 Weekly SEM DAM Market Value*

790,582.60
 Weekly SEM DAM Volume MWh*

Sources:
 * SEMO PX
 ** EPEX
 *** Nordpool

Legend ● NI Volume* ● ROI Volume* ● SEM DAM Price* ● GB EPEX DAM Price** ● GB Nordpool DAM Price***

Weekly Intraday Auction 1 Summary - Week Commencing 23 October 2023

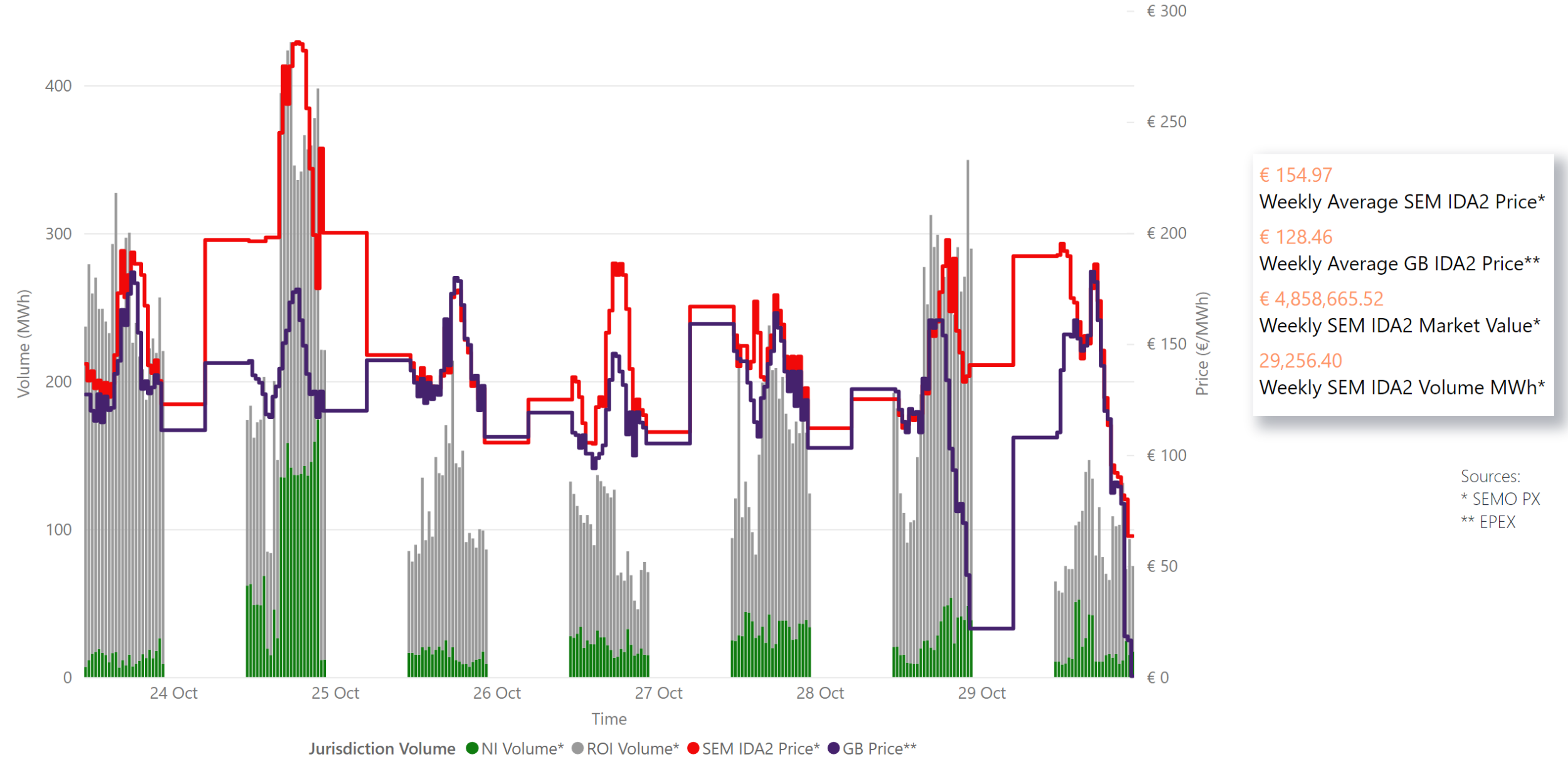


€ 134.30
 Weekly Average SEM IDA1 Price*
€ 114.50
 Weekly Average GB IDA1 Price**
€ 22,691,040.25
 Weekly SEM IDA1 Market Value*
165,871.70
 Weekly SEM DAM Volume MWh*

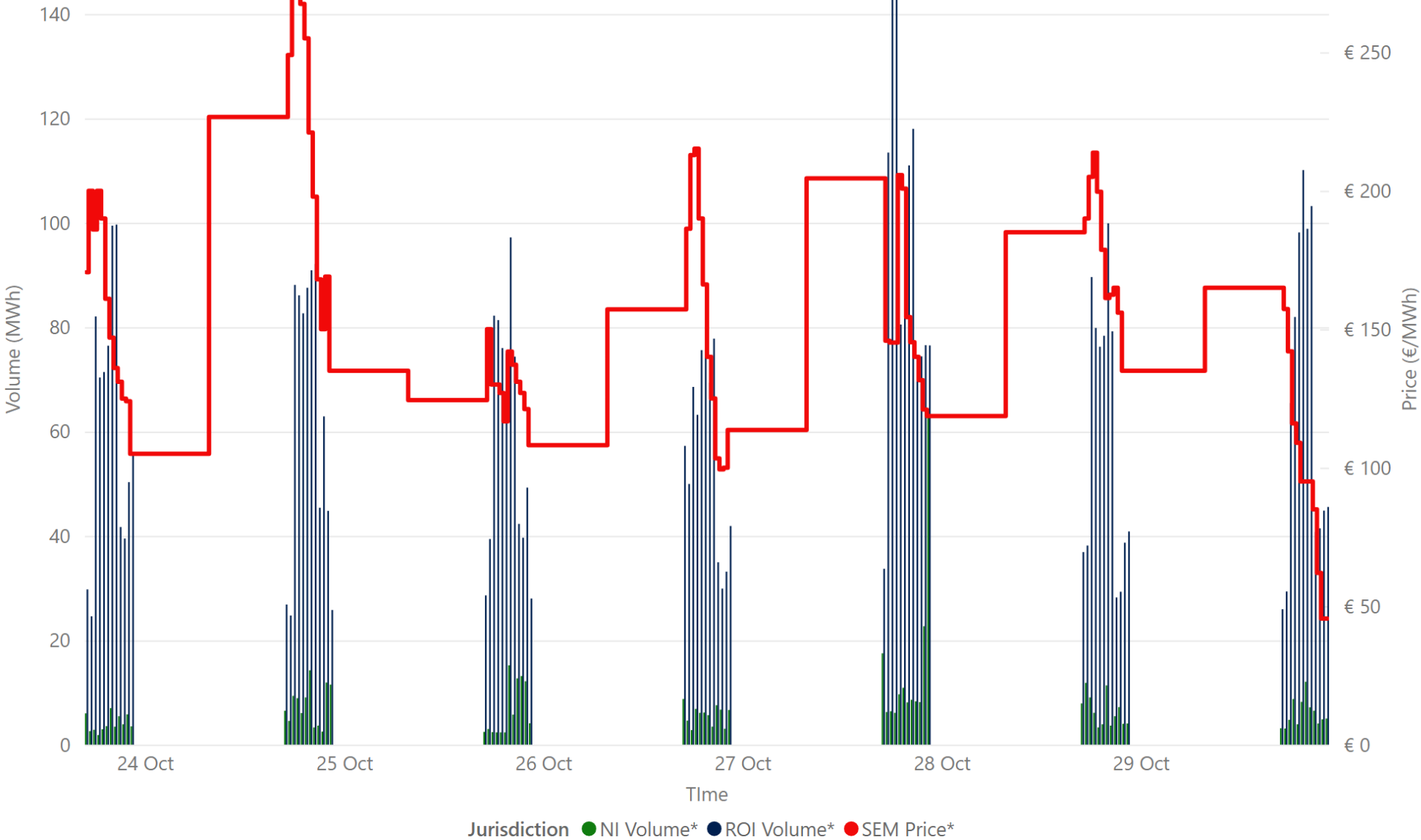
Sources:
 * SEMO PX
 ** EPEX

Legend ● NI Volume* ● ROI Volume* ● SEM IDA1 Price* ● GB IDA1 Price**

Weekly Intraday Auction 2 Summary - Week Commencing 23 October 2023



Weekly Intraday Auction 3 Summary - Week Commencing 23 October 2023



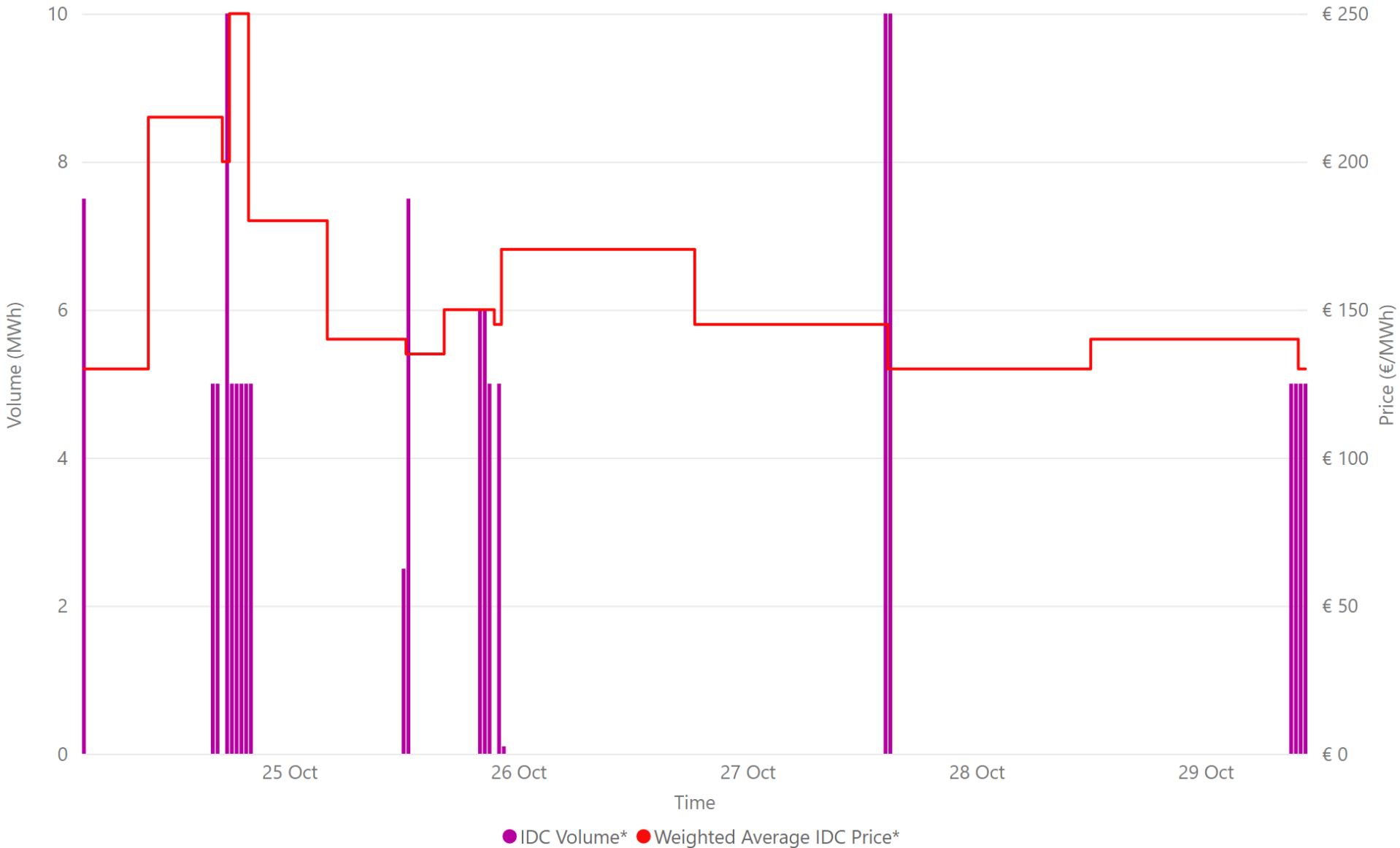
€ 154.38
Weekly Average SEM IDA3 Price*

€ 957,630.03
Weekly SEM IDA3 Market Value*

6,131.85
Weekly SEM IDA3 Volume MWh*

Source: * SEMO PX

Weekly Intraday Continuous Summary - Week Commencing 24 October 2023



€ 172.52
Weekly SEM IDC Average Price*
€ 250.00
Weekly SEM IDC Max Price*
€ 130.00
Weekly SEM IDC Min Price*
124.60
Weekly SEM IDC Volume MWh*

Source: * SEMO PX

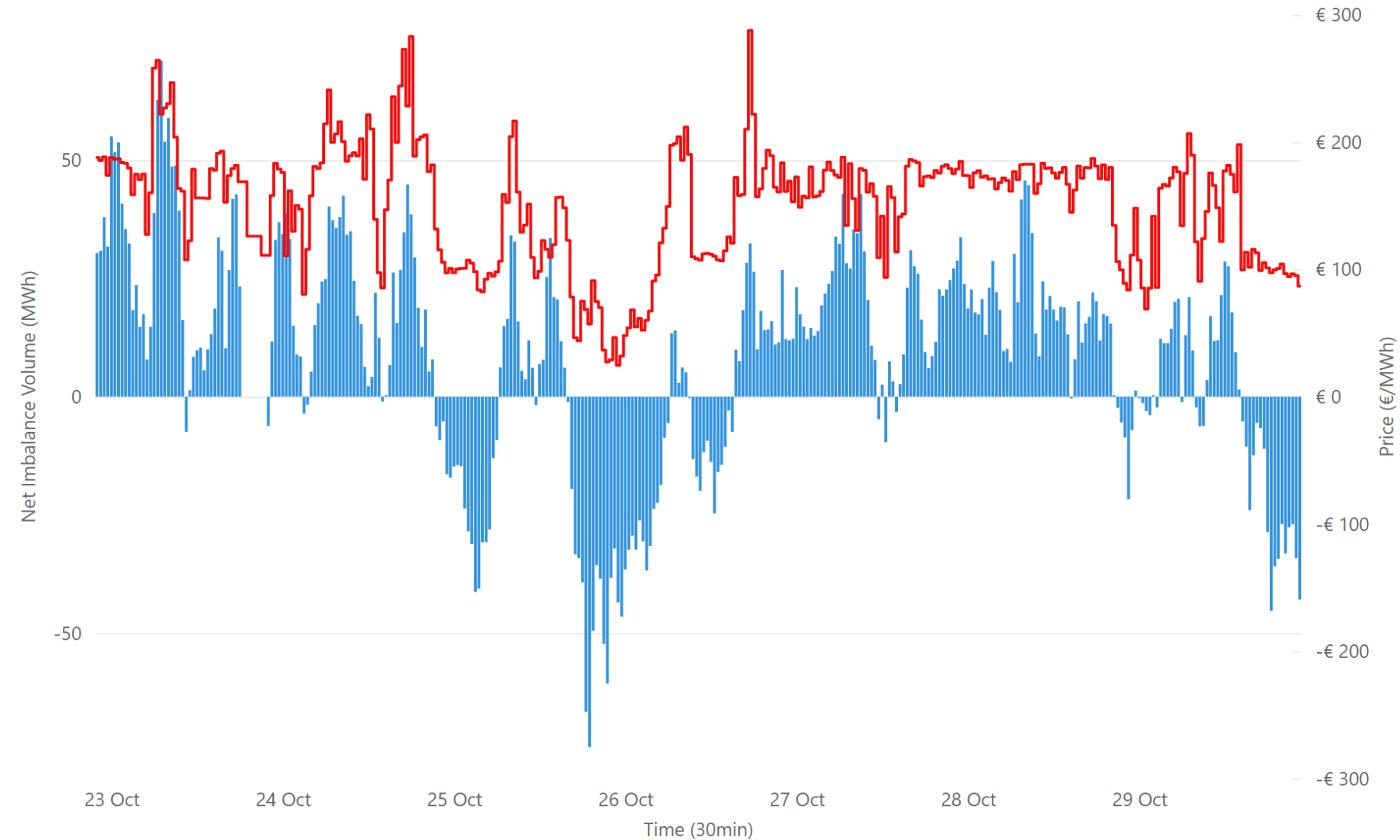
Weekly Balancing Market 5 Minute Summary - Week Commencing 23 October 2023



€ 150.43
Ave 5min Imbalance Price*
-€ 15.56
Min 5min Imbalance Price*
€ 377.77
Max 5min Imbalance Price*

Source: * SEMO

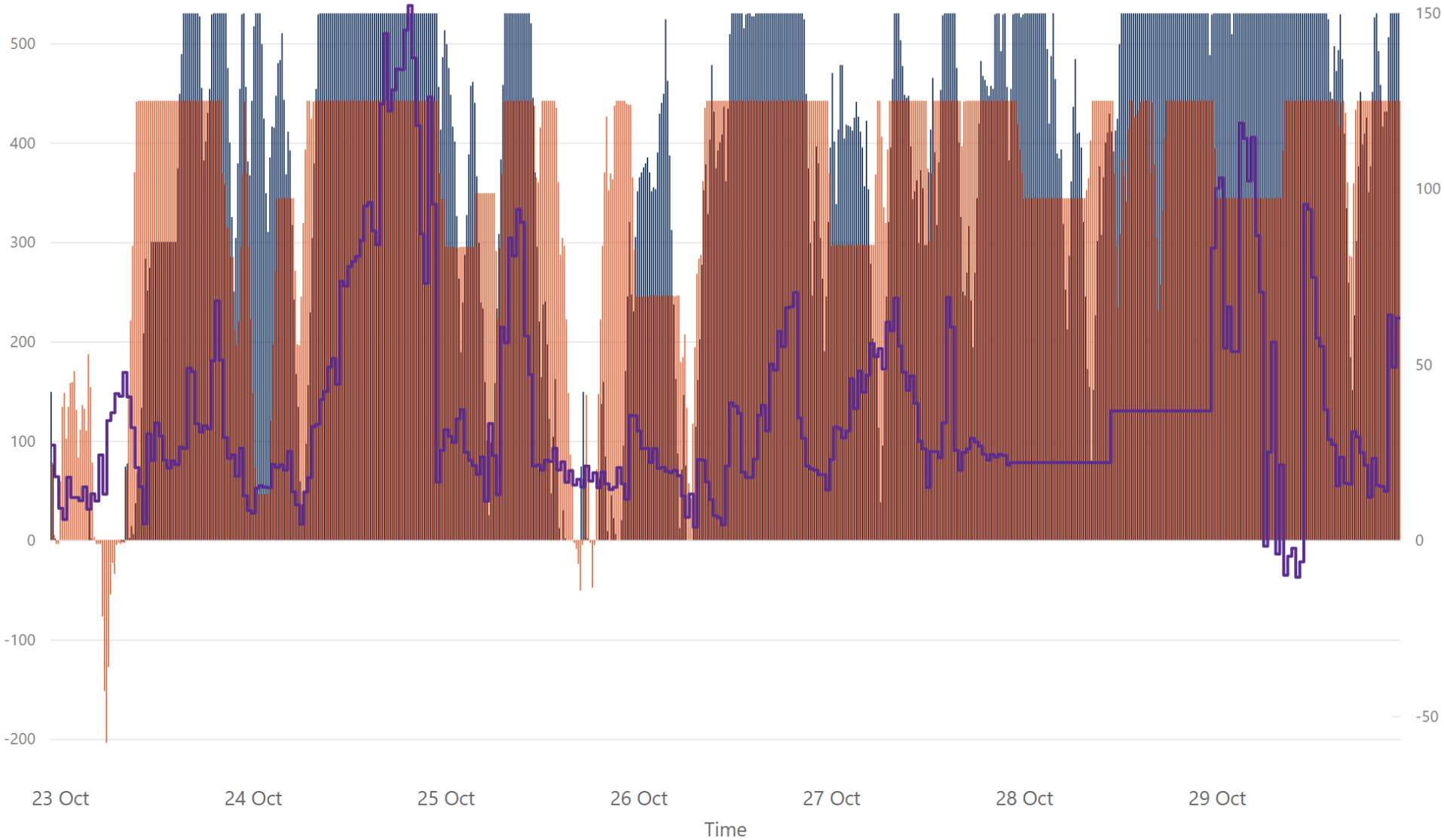
Weekly Balancing Market 30 Minute Summary - Week Commencing 23 October 2023



€ 150.34
Ave 30min Imbalance Price*
€ 287.75
Max 30min Imbalance Price*
€ 24.61
Min 30min Imbalance Price*
71.04
Max Net Imbalance Volume*
-74.08
Min Net Imbalance Volume*

Source: * SEMO

Weekly Interconnection Summary - Week Commencing 23 October 2023



241,254.00
Weekly MOYLE (MW) Import*

-859.00
Weekly MOYLE (MW) Export*

240,395.00
Weekly MOYLE (MW) NET*

255,137.00
Weekly EWIC (MW) Import*

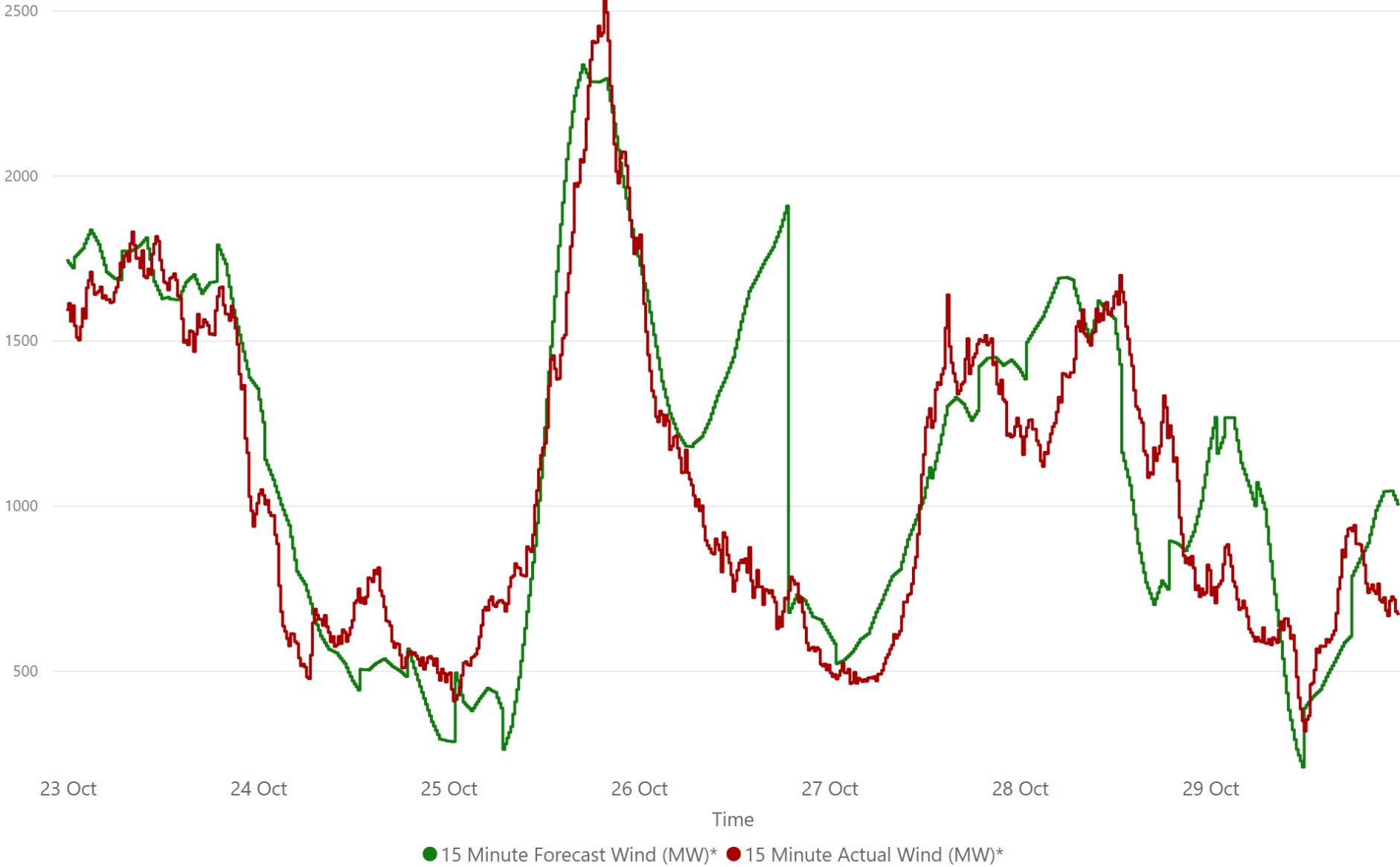
-2.00
Weekly EWIC (MW) Export*

255,135.00
Weekly EWIC (MW) NET*

Sources:
* EirGrid
** SEMO, EPEX & Nordpool

● EWIC Volume (MW)* ● MOYLE Volume (MW)* ● SEM-GB Spread**

Weekly Wind Capacity Summary - Week Commencing 23 October 2023



2564
Max Actual Wind (MW)*

317
Min Actual Wind (MW)*

2335
Max Forecast Wind (MW)*

208
Min Forecast Wind (MW)*

Sources:
* EirGrid